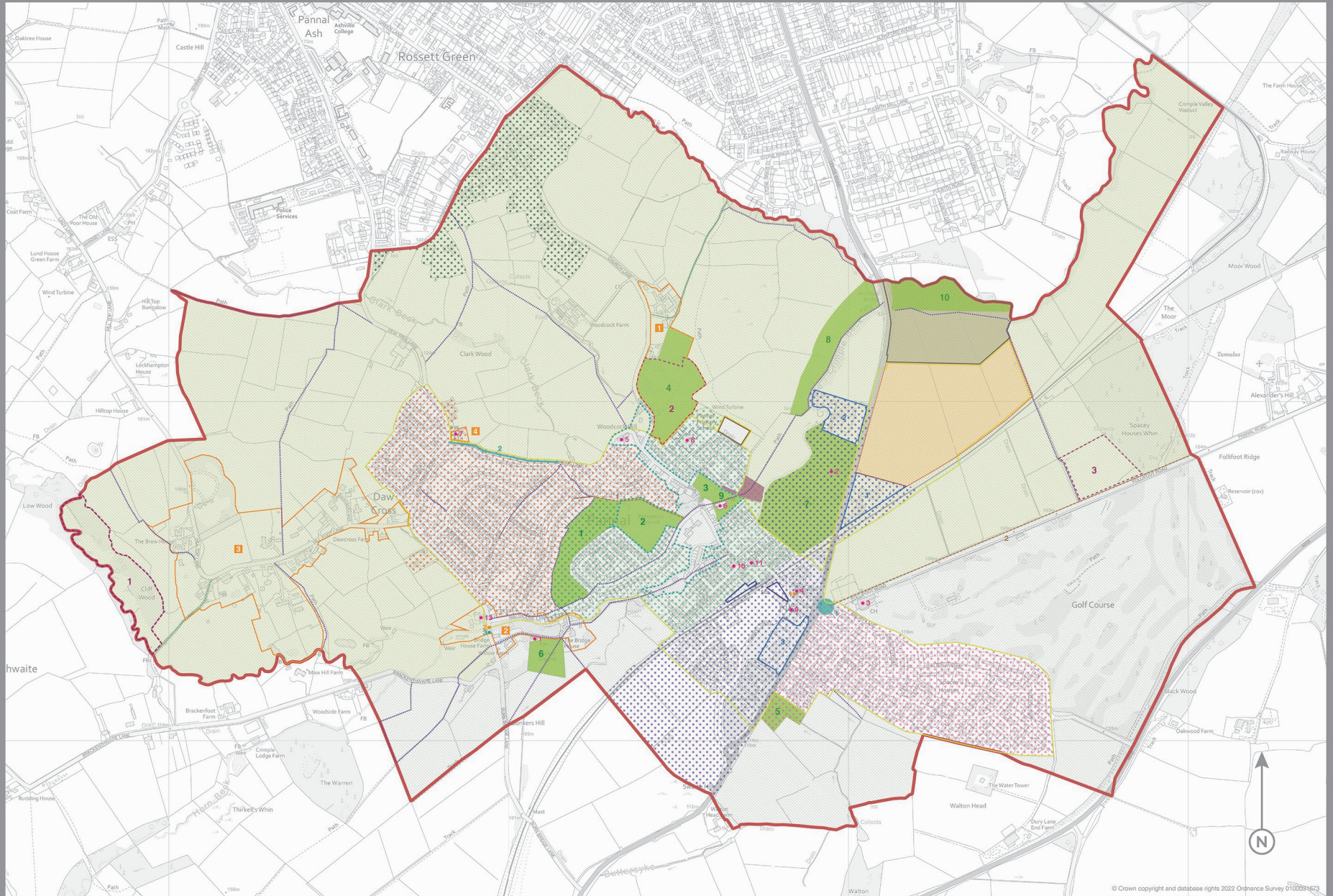


# Map Key

- NEIGHBOURHOOD AREA**
- Neighbourhood Area Boundary
- THE GREEN & NATURAL ENVIRONMENT**
- Green and Blue Infrastructure (ref POLICY GNE1)
  - Crimple Valley Special Landscape Area (ref POLICY GNE2)
  - Local Green Space (ref POLICY GNE3)
  - Land at Ainsford Bridge (ref POLICY GNE6)
- THE BUILT ENVIRONMENT**
- Local Heritage Areas (ref POLICIES BE2-3)
  - Non-Designated Heritage Assets (ref POLICY BE4)
  - Village Character Area Boundaries (ref POLICY BE5)
  - Rossett Green
  - Crimple Meadows and Pannal Green
  - Leeds Road Corridor
  - Walton Park
  - The Westminsters, The Oval, The Hazels and The Rosdales
- TRAFFIC, TRANSPORT & TRAVEL**
- Footpath (ref POLICY TTT1)
  - Bridleway (ref POLICY TTT1)
  - Footpath, Bridleway & Cycle Route Improvements (ref POLICY TTT1)
  - Pannal Station Car Park (ref POLICY TTT2)
  - Pannal Park and Stile (ref POLICY TTT4)
  - Highway Improvement Schemes (ref POLICY TTT8)
- COMMUNITY FACILITIES & SERVICES**
- Existing Community Facilities (ref POLICY CFS1)
  - Pannal Primary School Educational Facilities (ref POLICY CFS3)
- ECONOMIC DEVELOPMENT**
- Existing Employment Sites (ref POLICY ED1)
  - Employment Site South of Ainsford Bridge (ref POLICY ED2)
- NON-NEIGHBOURHOOD PLAN DESIGNATIONS**
- Pannal Conservation Area Boundary (ref POLICY BE1)
  - Site of Importance for Nature Conservation (SINC)
  - Development Limit (ref POLICIES H1-2)



## Sites List

### THE GREEN & NATURAL ENVIRONMENT

- 1. Local Green Space
- 1. Allen Wood
- 2. Crimple Meadows Recreation Ground
- 3. Pannal Village Green aka 'The Green'
- 4. Sandy Bank Wood
- 5. Long Acre Recreation Ground
- 6. Pannal Cricket Club Ground

### THE BUILT ENVIRONMENT

- 1. Local Heritage Areas
- 1. All Saints/Sandy Bank
- 2. Burn Bridge-Malthouse Lane
- 3. Hill Foot/Hill Top Lane
- 4. Pannal Methodist Church and Environs

### TRAFFIC, TRANSPORT & TRAVEL

- 1. Footpath, Bridleway & Cycle Route Improvements
- 1. Crimple Meadows Recreation Ground
- 2. Follfoot Road

### COMMUNITY FACILITIES & SERVICES

- 1. Existing Community Facilities
- 1. Pannal Cricket Club Pavilion
- 2. Pannal Sports Community Club
- 3. Pannal Golf Club Clubhouse
- 4. Pannal Memorial Hall

### Non-Designated Heritage Assets

- 1. Pannal Memorial Hall
- 2. Crimple Beck Bridge at Burn Bridge

### Highway Improvement Schemes

- 1. Follfoot Road/A61 Junction
- 2. Spring Lane
- 3. Crimple Beck Bridge at Burn Bridge

### Existing Employment Sites

- 1. Pannal Scout Hall
- 2. Church of St Robert of Knaresborough & Chapter House
- 3. Pannal Methodist Church & Church Hall
- 4. Pannal Primary School
- 5. Pannal Post Office and Village Shop
- 6. The Doctors Surgery
- 7. Pannal Dental Clinic
- 8. The Black Swan, Burn Bridge

### Existing Employment Sites

- 1. Ainsford Bridge
- 2. Crimple Hall
- 3. Spacey Houses

### NON-NEIGHBOURHOOD PLAN DESIGNATIONS

- 1. Sites of Importance for Nature Conservation (SINC)
- 1. Springhill Farm Wood aka Low Wood/Bill Wood
- 2. Sandy Bank Wood
- 3. Spacey Whin Field

# Pannal & Burn Bridge Neighbourhood Plan Policies Map

Pre-Submission Version

© Crown copyright and database rights 2022 Ordnance Survey 0100031673